



FLORANANDA IND. E COM. DE COSMÉTICOS E PRODUTOS NATURAIS LTDA ME
Rua Elias Bichara Tabbal, 736. Jd. América - Jaú, SP
CEP:17210-680 | Indústria Brasileira
+55 (14) 34160822 SAC: sac@bioessencia.com.br
www.bioessencia.com.br @bio_essencia

CERTIFICADO DE ANÁLISE

Óleo essencial de Vetivert (*Vetiveria zizanoides*)

LOTE	241028
DATA DE VALIDADE	10/2026
DATA DE FABRICAÇÃO	10/2024
ORIGEM	BRASIL
MÉTODO DE EXTRAÇÃO	DESTILAÇÃO A VAPOR DAS RAÍZES
RESULTADO	APROVADO

TESTE	ESPECIFICAÇÕES	RESULTADOS
ASPECTO	LÍQUIDO VISCOSO	OK
COR	MARROM AVERMELHADO A MARROM ESCURO	OK
ODOR	SECO, AMADEIRADO, QUENTE	OK
DENSIDADE (20°C)	0,980 - 1,025	1,007
ÍNDICE DE REFRAÇÃO (20°C)	1,520 - 1,530	1,526

Armazenar em local seco, longe de umidade e do calor, protegido da luz, em recipiente original bem vedado.

Não contem OGM, nem foi utilizado para teste em animais.

Produto 100% puro, isento de solvente e diluente.

Segundo RDC 481/99, não suscetível à contaminação microbológica.

Responsável Técnica: Gorete Vieira de Souza - CRQ 044100922

Produto certificado pelo IBD.

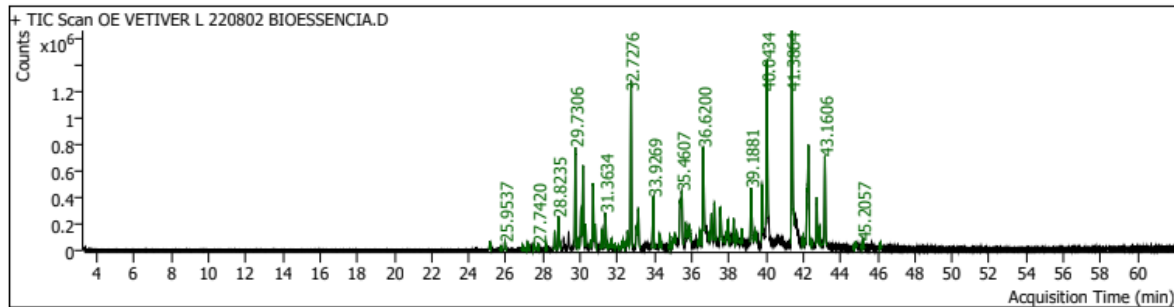




FLORANANDA IND. E COM. DE COSMÉTICOS E PRODUTOS NATURAIS LTDA ME
 Rua Elias Bichara Tabbal, 736. Jd. América - Jaú, SP
 CEP:17210-680 | Indústria Brasileira
 +55 (14) 34160822 SAC: sac@bioessencia.com.br
 www.bioessencia.com.br @bio_essencia

Este documento apresenta uma cópia idêntica da cromatografia disponibilizada pelo fornecedor.
CROMATOGRAFIA

Óleo essencial de Vetiver (*Vetiveria zizanioides*)
 Lote: 241028



Pk #	RT Min	Compound Name	CAS#	Peak Area	Component RI	Library RI	Match Factor	% of Total
1	25.1385	23.43 Ylangene<alpha->	14912-44-8	171124.0	1399		90.75	0.25
2	25.7275	23.75 Funebrene<2-epi-alpha->	65354-33-8	73267.9	1413		84.15	0.11
3	25.9537	(3aR,6R,8aS)-7,7-Dimethyl-8-methyleneoctahydro-1H-3a,6-methanoazulene	82026-02-6	214394.7	1419		87.80	0.32
4	26.8749	24.93 Acora-3,7(14)-diene	55732-78-0	80005.4	1441		87.86	0.12
5	27.1294	25.11 Funebrene<2-epi-beta->	854154-72-6	96072.7	1447		85.01	0.14
6	27.2189	GURJUNENE<ALPHA-> 25.6122	489-40-7	129908.3	1449		86.99	0.19
8	27.5182	CEDRENE<ALPHA-> 25.9985	469-61-4	129793.9	1457	1420	81.15	0.19
9	27.7420	26.64 Muurolo-3,5-diene<cis->	157374-44-2	167593.5	1462		81.87	0.25
10	28.1638	(1R,3aS,8aS)-7-Isopropyl-1,4-dimethyl-1,2,3,3a,6,8a-hexahydroazulene	36577-33-0	126484.3	1472		88.68	0.19
11	28.6279	(3S,3aS,6R,8aS)-3,8,8-Trimethyl-7-methyleneoctahydro-1H-3a,6-methanoazulene	31145-21-8	482463.1	1484		96.40	0.71
12	28.8235	26.85 Khusimene	18444-94-5	1214922.8	1489		94.68	1.80
17	29.7306	28.83 Muurolole<alpha->	31983-22-9	2633405.0	1511		95.54	3.90
18	29.9026	5-Isopropyl-2-methylphenethyl acetate	27913-43-5	182137.2	1516		83.59	0.27
19	30.0463	GURJUNENE<ALPHA-> 25.6122	489-40-7	1028721.7	1519	1410	94.52	1.52
20	30.1453	28.53 Vetispirene<beta->	28908-27-2	2215027.1	1522		81.33	3.28
21	30.2843	MUUROLENE<GAMMA-> 28.3356	30021-74-0	566591.3	1526	1477	96.32	0.84
22	30.5529	CADINENE<GAMMA-> 29.8789	39029-41-9	180794.7	1532		93.35	0.27
23	30.6895	CADINENE<DELTA-> 30.0983	483-76-1	1825138.5	1536	1521	98.28	2.70
24	30.8050	Isolongifolene, 9,10-dehydro-	1000151-67-1	682247.7	1539		85.51	1.01
25	31.1631	29.53 Nootkatene	5090-61-9	548265.8	1548		85.41	0.81
26	31.3634	29.97 Zonarene	41929-05-9	1163566.8	1553		91.78	1.72
27	31.4906	29.97 Zonarene	41929-05-9	100546.7	1556		83.34	0.15
28	31.6650	30.09 Vetivenene<gamma->	28908-26-1	191516.4	1561		92.01	0.28
29	31.8629	1H-Cyclopropa[<i>a</i>]naphthalene, 1a,2,3,3a,4,5,6,7b-octahydro-1,1,3a,7-tetramethyl-, [1aR-(1a.alpha.,3a.alpha.,7b.alpha.)]-	489-29-2	70657.2	1566		81.37	0.10
30	32.0561	28.66 Valencene	4630-07-3	76653.9	1571		82.66	0.11
31	32.2517	30.62 Calacorene<alpha->	21391-99-1	166030.1	1576		85.28	0.25
32	32.3106	(4aS,8R)-4a,8-Dimethyl-4,4a,5,6,7,8-hexahydronaphthalen-2(3H)-one	69460-62-4	239417.3	1578		88.37	0.35
33	32.5532	ELEMOL 31.2670	8024-27-9	469845.9	1584	1551	92.50	0.70
34	32.7276	31.02 Vetivenene<beta->	27840-40-0	4581816.2	1588		88.18	6.78
35	33.0339	PATCHOLENE<BETA-> 24.6437	514-51-2	615124.7	1596	1387	87.29	0.91
36	33.1211	2-((4aS,8R,8aR)-4a,8-Dimethyl-3,4,4a,5,6,7,8,8a-octahydronaphthalen-2-yl)propan-2-ol	194607-96-0	1184449.0	1598		88.74	1.75
39	33.9269	3,5,11-Eudesmatriene	193615-07-5	1645394.0	1620		93.83	2.43
41	34.2685	1-Naphthalenol, 1,2,3,4,4a,7,8,8a-octahydro-1,6-dimethyl-4-(1-methylethyl)-, [1R-(1.alpha.,4.beta.,4a.beta.,8a.beta.)]-	19435-97-3	456301.1	1629		86.93	0.68



FLORANANDA IND. E COM. DE COSMÉTICOS E PRODUTOS NATURAIS LTDA ME
 Rua Elias Bichara Tabbal, 736. Jd. América - Jaú, SP
 CEP:17210-680 | Indústria Brasileira
 +55 (14) 34160822 SAC: sac@bioessencia.com.br
 www.bioessencia.com.br @bio_essencia

Este documento apresenta uma cópia idêntica da cromatografia disponibilizada pelo fornecedor.

Pk #	RT Min	Compound Name	CAS#	Peak Area	Component RI	Library RI	Match Factor	% of Total
44	34.8269	10s,11s-Himachala-3(12),4-diene	60909-28-6	325710.3	1644		90.19	0.48
45	35.0767	Cadina-1(10),6,8-triene	1460-96-4	496496.0	1651		86.47	0.73
47	35.3759	33.95 Cubenol<1-epi->	19912-67-5	1012121.8	1659		88.18	1.50
48	35.4607	Selin-6-en-4.alpha.-ol	118173-08-3	1725874.4	1661		81.08	2.55
49	35.6681	(E)-2-((8R,8aS)-8,8a-Dimethyl-3,4,6,7,8,8a-hexahydronaphthalen-2(1H)-ylidene)propanal	137695-18-2	303031.9	1667		80.05	0.45
50	35.7765	EUDESMOL<10-EPI-GAMMA-> 34.1604	15051-81-7	184900.6	1670	1626	80.80	0.27
51	35.8731	33.60 Cubenol<1,10-di-epi->	73365-77-2	564795.8	1672		82.93	0.84
53	36.4409	34.93 Cadinol<alpha->	481-34-5	455983.9	1688		81.89	0.67
54	36.6200	34.93 Cadinol<alpha->	481-34-5	3531259.7	1692		92.49	5.23
56	36.9050	(2S)-2-((1R,3aR,4R,5S,7aS)-1,7a-Dimethyloctahydro-1H-1,2,4-(epimethanetriyl)inden-5-yl)propan-1-ol	30810-34-5	140256.8	1700		83.14	0.21
57	37.0558	40.15 Isovalencenol<(E)->	22387-74-2	799546.4	1704		80.90	1.18
58	37.2255	(E)-2-((8R,8aS)-8,8a-Dimethyl-3,4,6,7,8,8a-hexahydronaphthalen-2(1H)-ylidene)propanal	137695-18-2	1144946.8	1709		88.97	1.69
59	37.5388	(2R,3R,3aR,6R,8aS)-3,7,7-Trimethyl-8-methylenooctahydro-1H-3a,6-methanoazulen-2-ol	28102-79-6	1185816.7	1718		92.52	1.75
61	37.8428	35.54 Zizanone<epi->	28624-27-3	257848.1	1726		81.00	0.38
62	37.9417	(3S,3aS,5R,6S,7aS)-3,6,7,7-Tetramethyloctahydro-3a,6-ethanoinden-5-ol	66512-56-9	721996.2	1729		88.95	1.07
64	38.2504	36.74 Eudesm-7(11)-en-4-ol	473-04-1	641314.8	1738		86.59	0.95
65	38.4106	trans-Valerenyl acetate	101527-74-6	307911.0	1743		85.27	0.46
66	38.6934	Benzene, 1,3,5-tris(1-methylethyl)-	717-74-8	438458.8	1750		88.24	0.65
68	39.1881	37.84 Vetiselinenol	28102-68-3	2126866.7	1764		95.65	3.15
69	39.4167	.alpha.-Vetivol	57422-86-3	429903.9	1771		83.17	0.64
71	39.7795	.alpha.-Vetivol	57422-86-3	1441892.4	1781		95.42	2.13
73	40.0434	38.26 Khusimol	16223-63-5	4787721.2	1789		96.68	7.08
77	41.3864	40.15 Isovalencenol<(E)->	22387-74-2	6759113.3	1828		92.27	10.00
79	41.9708	NOOTKATONE 40.7008	91416-23-8	217930.4	1845	1808	85.83	0.32
80	42.2700	41.20 Vetivone<beta->	18444-79-6	4819307.7	1854		90.55	7.13
81	42.7247	(E)-2-((8R,8aS)-8,8a-Dimethyl-3,4,6,7,8,8a-hexahydronaphthalen-2(1H)-ylidene)propanal	137695-18-2	1417835.4	1868		96.19	2.10
82	42.8755	trans-Valerenyl acetate	101527-74-6	520314.2	1872		85.00	0.77
84	43.1606	41.89 Vetivone<alpha->	15764-04-2	2523145.3	1881		97.62	3.73
87	44.8288	2(3H)-Naphthalenone, 4,4a,5,6,7,8-hexahydro-4a,5-dimethyl-3-(1-methylethylidene)-, (4a-cis)-	19598-45-9	186762.5	1932		80.15	0.28
89	45.2057	2H-Cyclopropa[a]naphthalen-2-one, 1,1a,4,5,6,7,7a,7b-octahydro-1,1,7,7a-tetramethyl-, (1a.alpha.,7.alpha.,7a.alpha.,7b.alpha.)-	6831-17-0	199453.0	1943		83.53	0.30
91	46.1482	.beta.-Cyclodihydrocostunolide	22387-64-0	169372.3	1973		81.88	0.25